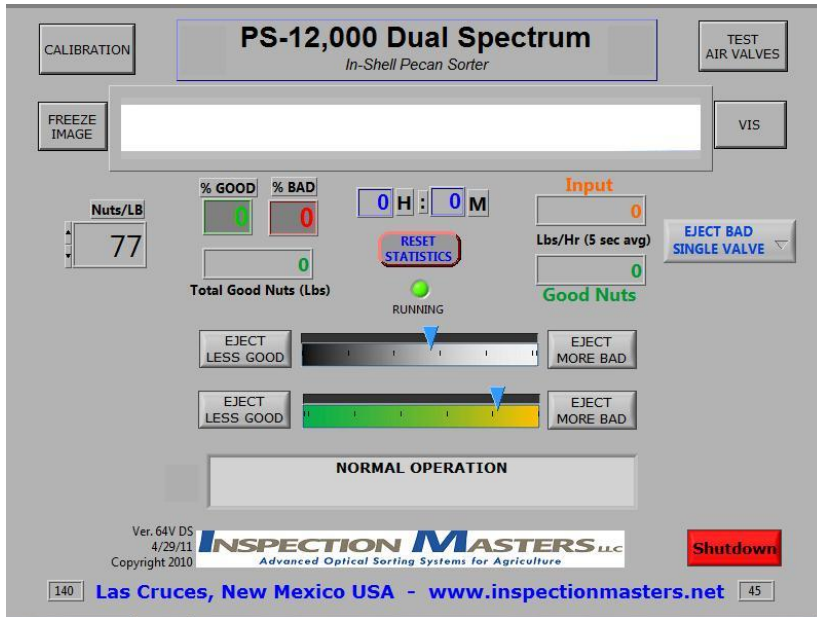


Dual Spectrum Imaging™ is for Non-Geeks

Set-up and operation of a DSI enabled sorter is a snap. Let's go through the buttons on the DSI Control Panel, starting at the upper left -



CALIBRATION – Press the CALIBRATION button to tell the DSI software that you are about to run a sample batch – about 40 good pecans. This “teaches” our proprietary software what NOT to reject. The software “memorizes” both the near infrared (NIR) and color signatures of the sample. It then “knows” to let good pecans pass through to your inspection table. Anything that does not have BOTH correct signatures is tagged for ejection.

TEST AIR VALVES – Press this button to test each air valve. It’s a quick way to identify a bad valve that may be lowering sort efficiency. Usually done once a day.

FREEZE IMAGE – Image Area View – VIS/COLOR – The Image Area View (blank in the picture above) shows what the camera sees in real time as the product flows past. The FREEZE IMAGE button freezes and unfreezes the image so that you can see if the product is too crowded as it passes the image area. Overcrowding can lead to a loss of sorter efficiency. The VIS-NIR button switches between the color and NIR images so you can check that both spectrums are operational.

Nuts/LB – Raise or lower this number to tell the sorter how many nuts per pound are flowing through the sorter so that the computer can accumulate and display production data.

%GOOD - %BAD – Total Good Nuts (lbs.) – A running tabulation of the percentage of “good” nuts and “bad” or reject material flowing through the sorter, and the accumulated pounds of Good Nuts since the last reset. Very useful data, especially for the custom cleaner.

(H)ours – (M)inutes – Tabulates and displays the processing time for a particular batch of product.

RESET STATISTICS – Resets all tabulations and calculations to zero for the start of the next batch.

INPUT – GOOD NUTS – A running tabulation of the rate that product goes into the sorter and the rate that good nuts flow to your inspection table. A good check on your overall plant efficiency.

EJECT BAD SINGLE VALVE – One of four ejection valve settings. “Eject Bad Single Valve” is the most common setting. “Eject Bad Multiple Valve” is used when large sticktights, etc. are to be ejected. “Eject Good” settings are used to re-run ejected material to salvage mistakenly ejected good nuts.

EJECT LESS GOOD – EJECT MORE BAD – A pair of sliding bars to fine tune the sorter during normal operation. The black and white bar is for NIR, the green/yellow bar is for the visible/color spectrum.

MESSAGE CENTER – Displays the sorter’s status – Initializing, Normal Operation, Shutting Down, etc.

SHUTDOWN – Press to automatically shut down the computer and turn off the sorter.

INSPECTION MASTERS LLC
Advanced Optical Sorting Systems for Agriculture

351 N. 17th Street, Las Cruces, NM 88008
Off: 575.647.8203

P.O. Box 100, Las Cruces, NM 88004
Fax: 575.647.8248

www.inspectionmasters.net